



*Increase efficiency and  
improve your bottom line  
with the Neptune E4000  
and **F-RAMS***

F-RAMS® and the Neptune E4000 form a fully-integrated electronic delivery management system, eliminating manual data entry and improving your accuracy and speed of delivery. Designed for flexibility, F-RAMS® can accommodate whatever level of automation you require. Start with a simple "Pump and Print" function, and upgrade your fleet over time, adding capabilities to significantly reduce office work, maintenance and support.



**neptune**

*Smarter Today,  
Smarter Tomorrow.*

 **ACTARIS**  
metering systems

US Liquid Measurement Inc.  
Tel: (800) 833-3357  
Fax: (864) 223-0341  
E-mail: [flowmeas@greenwood.actaris.com](mailto:flowmeas@greenwood.actaris.com)  
[www.neptuneflowmeter.com](http://www.neptuneflowmeter.com)



# F-RAMS

## Casio EG800

Delivers maximum performance and reliability in lightweight and extremely rugged design that's easy to carry. The EG800 incorporates the newest DSRM data security.

- Compact Flash Card Type I or II
- Touch Screen
- Rechargeable Main Battery, Built-in Backup Battery
- 8 Hour Continuous Input and Data Display
- Microsoft® Windows CE v3.0
- Infrared port
- System memory 32 Meg, (Expandable)
- USB or Serial RS232 Connection
- Wireless LAN connection
- Drip-Proofing IPx2
- Display 240 x 320 Dots
- TFT Color LCD (65,536)
- ActiveSync® 3.5
- CPU: V4122 (150) MHZ
- Approximate size 5 1/8" (L) x 3 3/16" (W) x 11/16" (H)
- Weight: Approximately 6.7 OZS



# F-RAMS

## 2100

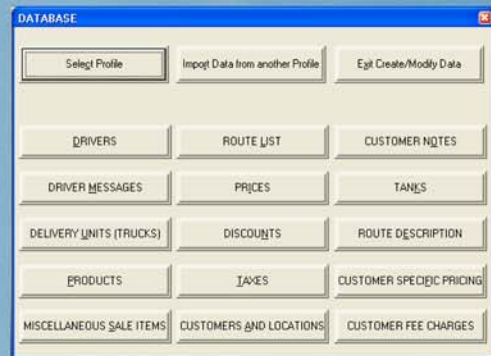
The waterproof F-RAMS weighs just 17 ounces, and is designed to withstand the toughest operating conditions. The F-Rams 2100 works wherever and whenever you need it.

- Rugged Waterproof design
- Meets military specifications for drop, vibration and both high and low temperature operation (MIL-STD 810F—IP67—810)
- 200 MHz or 400 MHz Intel PXA255 Xscale Processor
- 2 Expansion Slots — Type I and Type II Compact Flash
- Touch Screen
- Main Rechargeable 3800 mAh NiMH Battery
- ActiveSync® 3.8
- 15 Hour Continuous Input and Data Display.
- Power Boot Module
- Windows Mobile 2003
- Bluetooth
- Expandable Memory
- USB or Serial RS232 Connection
- Optional LAN, GPS and wireless connection
- Display 240 x 320 (1/4 VGA) TFT with LED front Light
- System memory 64 or 128 MB with 16MB reserved

# F-RAMS LaunchPad™

Routing and database software for handheld computers

- Interfaces to Windows 95, 98, 2000, and XP.
- Customizable ticket format
- Password protection
- Assign tanks, trucks, products, drivers, customers, & locations
- Flexible pricing capabilities including discounts, taxes, fees, and miscellaneous charges
- Driver and customer notes (customer note field can be used as an electronic route card)
- Step pricing
- Trip charges
- Balances 30-60-90
- Different locations with billing addresses
- Generate delivery reports



US Liquid Measurement Inc.  
 Tel: (800) 833-3357  
 Fax: (864) 223-0341  
 E-mail: flowmeas@greenwood.actaris.com  
 www.neptuneflowmeter.com