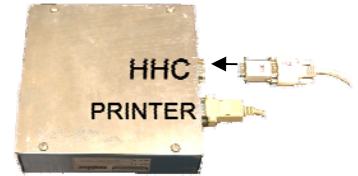


Quick START guide for the Neptune E4000 Configuration Software

Hardware Requirements

To connect your computer Serial Port to the E4000 Junction Box HHC Serial Port (the port not occupied by the printer) use a Female DB9 to Female DB9 cable and a Null Modem adapter.

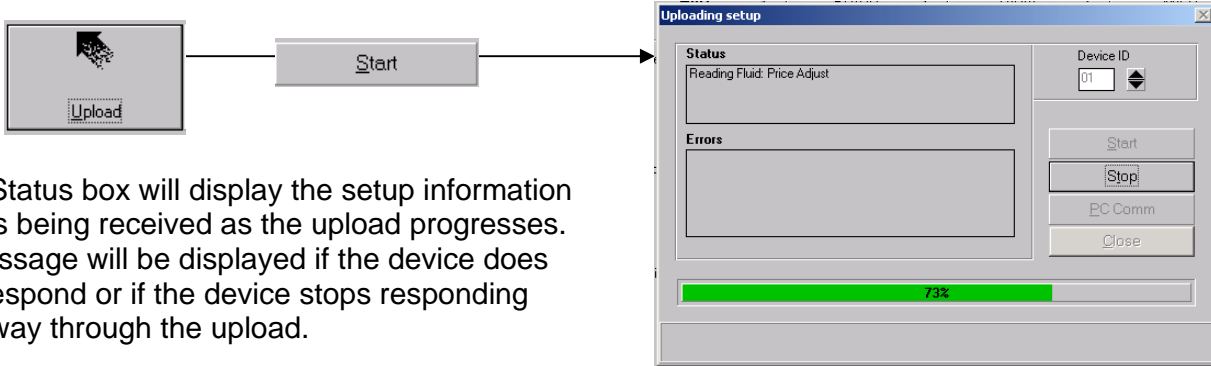
- 6 ft Female DB9 to Female DB9 cable Radio Shack part # 26-152B.
- Null modem Radio Shack part # 26-264B



To install the software, please follow the instructions printed on the CD-ROM. Once installed, click on the Neptune E4000 Icon to enter the program.

Uploading setup from the E4000

Use the Upload command to retrieve the E4000 configuration Data **from** the register. From the FILE tab click on the “Upload” button to open the uploading setup window. Then press start to begin the upload.



The Status box will display the setup information that is being received as the upload progresses. A message will be displayed if the device does not respond or if the device stops responding part way through the upload.

To save the E4000 configuration to your computer

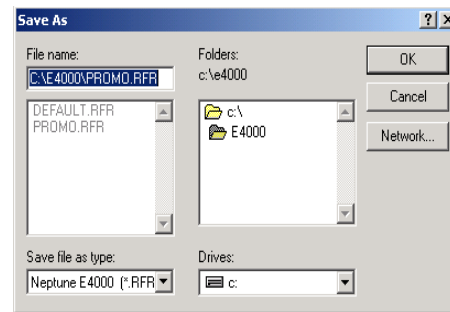


From the FILE tab, click either the “SAVE” or “SAVE AS” button. The “SAVE AS” button will allow you to save the information with your choice of file name and select the folder in which to save the new file.

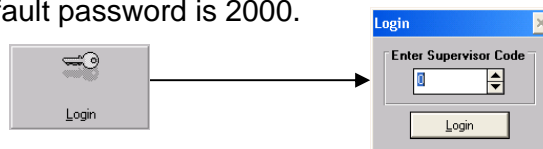
To download a configuration from the computer to the E4000

Use the Download command to send new or saved E4000 configuration data **to** the register.

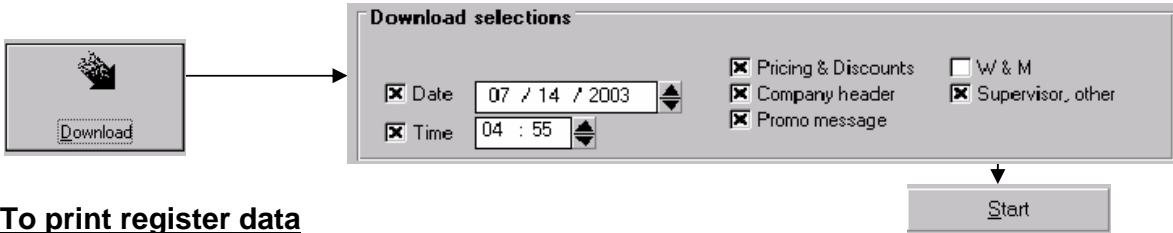
The Download section is available only if you “login” to Supervisor mode.



Note: Click on “Login” and enter the correct password. The Supervisor password is taken from the setup data uploaded from the E4000. You must know the current password to enter Supervisor mode. The register password can be edited once in the Administration screen. If you do not remember the Supervisor password it is possible to view the current register password in the E4000 System Setup report, see below. The factory default password is 2000.

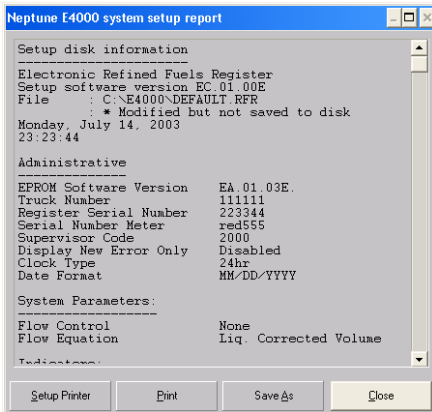


Once Supervisor mode is enabled, from the FILE tab click on the “Download” button to open the downloading setup window. Then press start to begin the download. You can choose which register information you want to change by checking the boxes in the download selection.



To print register data

The Print Setup function prints out all details of a configuration file. From the FILE tab, click on the “Print Setup” button.



A new window will show you the configuration setup. If you click on “print” you will send it to your default printer.

To program up to 10 products

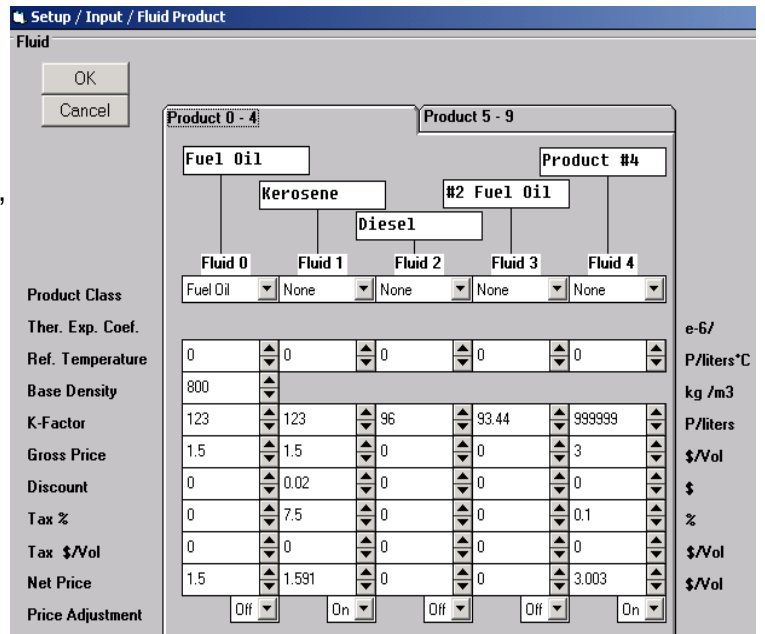
From the Setup tab, click on the “Fluid Product” button to create new products or edit existing ones.

Note: the default K-Factor is 999999 as is shown for product #4.

If this figure is not changed, i.e. the meter is not calibrated for this product, you cannot deliver this product. It will not appear in route mode.

Note:

To download Weights & Measures data from the computer to the register, such as Product name, K-factor and Product Class/Temperature Compensation, the register has to be in Weights & Measures mode.



For more detailed help with the configuration program click on the “help” Taskbar at the top of the screen.